

Are you still faxing?

Check out the benefits of submitting your authorizations through the portal!

1 **Digital collaboration** with other organizations using Cohere. This creates a more seamless patient care experience.



Faster access to patient care

70%

2 Everything you need to know will be surfaced in the portal, **reducing the need for daily communication with reviewers**. Submit your request, view updates, and get notification when your requests are decided.



Provider satisfaction rate

93%

3 A best-in-class provider experience designed to **reduce friction**.

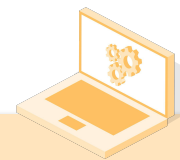
On average, Cohere enables services to be scheduled **4 days faster!**



Auto determination rate

87%

The screenshot shows the Cohere Health portal interface. At the top, it says "cohere HEALTH" and "Tell us about your request". Below that, there's a "Request details" section with radio buttons for "Outpatient" (selected) and "Inpatient". There's a "Start date" field with a calendar icon and the format "mm/dd/yyyy". Below that is a "Diagnosis codes" section with two search fields: "Search for primary diagnosis code" and "Search for secondary diagnosis codes (optional)". At the bottom, there's a "Procedure codes" section.



Reduction in auth processing time

40%